



Antler Drive | Rugeley | WS15 2XS

£325,000

 **Webbs**
estate agents

Summary

Property Description: A three bedroomed detached home in a cul-de-sac position. Offered with NO UPWARD CHAIN Location & Lifestyle: Situated in a sought-after area of Etchinghill, this detached home offers proximity to Etchinghill and the stunning walks of Cannock Chase, making it an ideal residence for dog walkers and outdoor enthusiasts. The property is within walking distance to the beautiful countryside, providing a tranquil living environment Key Features: Entrance Hall Lounge Dining Room Extended Kitchen Utility Room First Floor Landing Three Bedrooms Bathroom Separate WC Off-road parking Delightful garden to rear In summary, don't miss out on the chance to make this your new home. Contact us today to schedule a viewing and experience the magic for yourself. For those who crave the open air, for those who cherish nature's beauty, this is a must-see property. EPC rating:C Tenure:Freehold Council Tax Band:C - Rugeley Town Council - Cannock Chase District Council

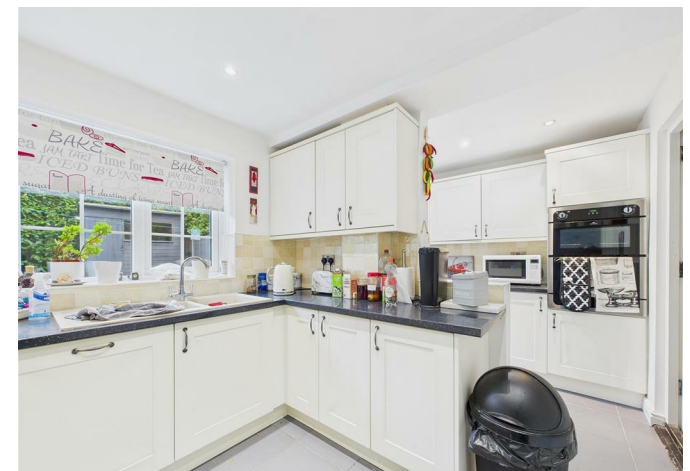
Key Features

- NO UPWARD CHAIN
- UPVC DOUBLE-GLAZING
- GAS CENTRAL HEATING

Rooms and Dimensions

Full Description

Identification Checks (R)







Approximate total area⁽¹⁾
 1062 ft²
 98.7 m²

Reduced headroom
 20 ft²
 1.9 m²

(1) Excluding balconies and terraces

Reduced headroom
 Below 5 ft/1.5 m

Calculations reference the RICS IPMS 3C standard. Measurements are approximate and not to scale. This floor plan is intended for illustration only.

GIRAFFE360



Webbs Estate Agents - endeavour to maintain accurate depictions of properties in Virtual Tours, Floor Plans and descriptions, however, these are intended only as a guide and purchasers must satisfy themselves by personal inspection.

Energy Efficiency Rating		Environmental Impact (CO ₂) Rating	
Rating	Score	Rating	Score
Very low energy (A)	82	Very low energy (A)	82
Low energy (B)	79	Low energy (B)	79
Medium energy (C)	76	Medium energy (C)	76
High energy (D)	73	High energy (D)	73
Very high energy (E)	70	Very high energy (E)	70
Very high energy (F)	67	Very high energy (F)	67
Very high energy (G)	64	Very high energy (G)	64